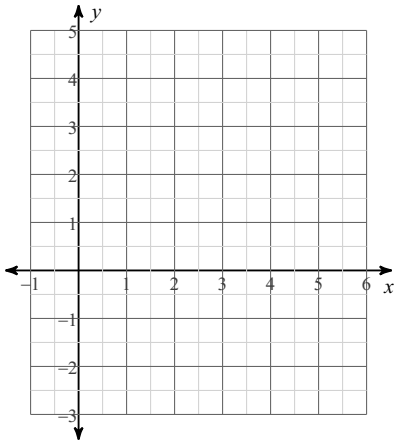


## Ch 4 Test Review

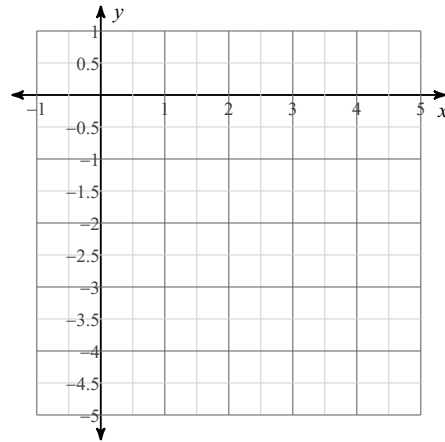
Date \_\_\_\_\_ Period \_\_\_\_\_

**Sketch the graph of each function.**

1)  $y = x^2 - 8x + 15$



2)  $y = x^2 - 6x + 5$

**Solve each equation by taking square roots.**

3)  $10x^2 + 2 = 162$

4)  $-5 - 3m^2 = -8$

**Solve each equation by factoring.**

5)  $b^2 + 3b = 28$

6)  $r^2 + 2 = -3r$

$$7) 2x^2 - 8x = 64$$

$$8) 4x^2 - 32 = -8x$$

**Solve each equation by completing the square.**

$$9) x^2 - 2x - 33 = 4$$

$$10) v^2 - 4v - 22 = -5$$

**Use the discriminant to determine the number of real solutions to each equation.**

$$11) 7a^2 - 3a - 4 = -2$$

$$12) 10x^2 + 4x - 1 = -5$$

**Solve each equation with the quadratic formula.**

$$13) 5x^2 - 7x - 52 = 0$$

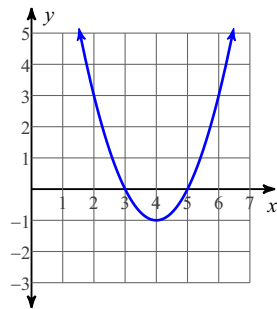
$$14) 4p^2 - 49 = 0$$

$$15) 5p^2 - 9p - 11 = 3$$

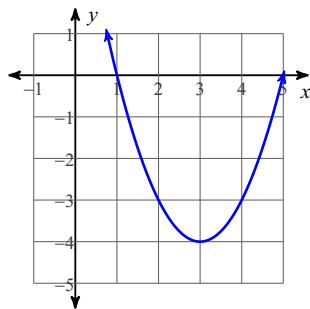
$$16) 2x^2 - 2x - 27 = -3$$

## Answers to Ch 4 Test Review

1)



2)



3)  $\{4, -4\}$

4)  $\{1, -1\}$

8)  $\{2, -4\}$

11) Two

15)  $\left\{\frac{14}{5}, -1\right\}$

5)  $\{-7, 4\}$

9)  $\{1 + \sqrt{38}, 1 - \sqrt{38}\}$

12) None

16)  $\{4, -3\}$

6)  $\{-1, -2\}$

10)  $\{2 + \sqrt{21}, 2 - \sqrt{21}\}$

13)  $\left\{4, -\frac{13}{5}\right\}$

7)  $\{8, -4\}$

14)  $\left\{\frac{7}{2}, -\frac{7}{2}\right\}$

14)  $\left\{\frac{7}{2}, -\frac{7}{2}\right\}$